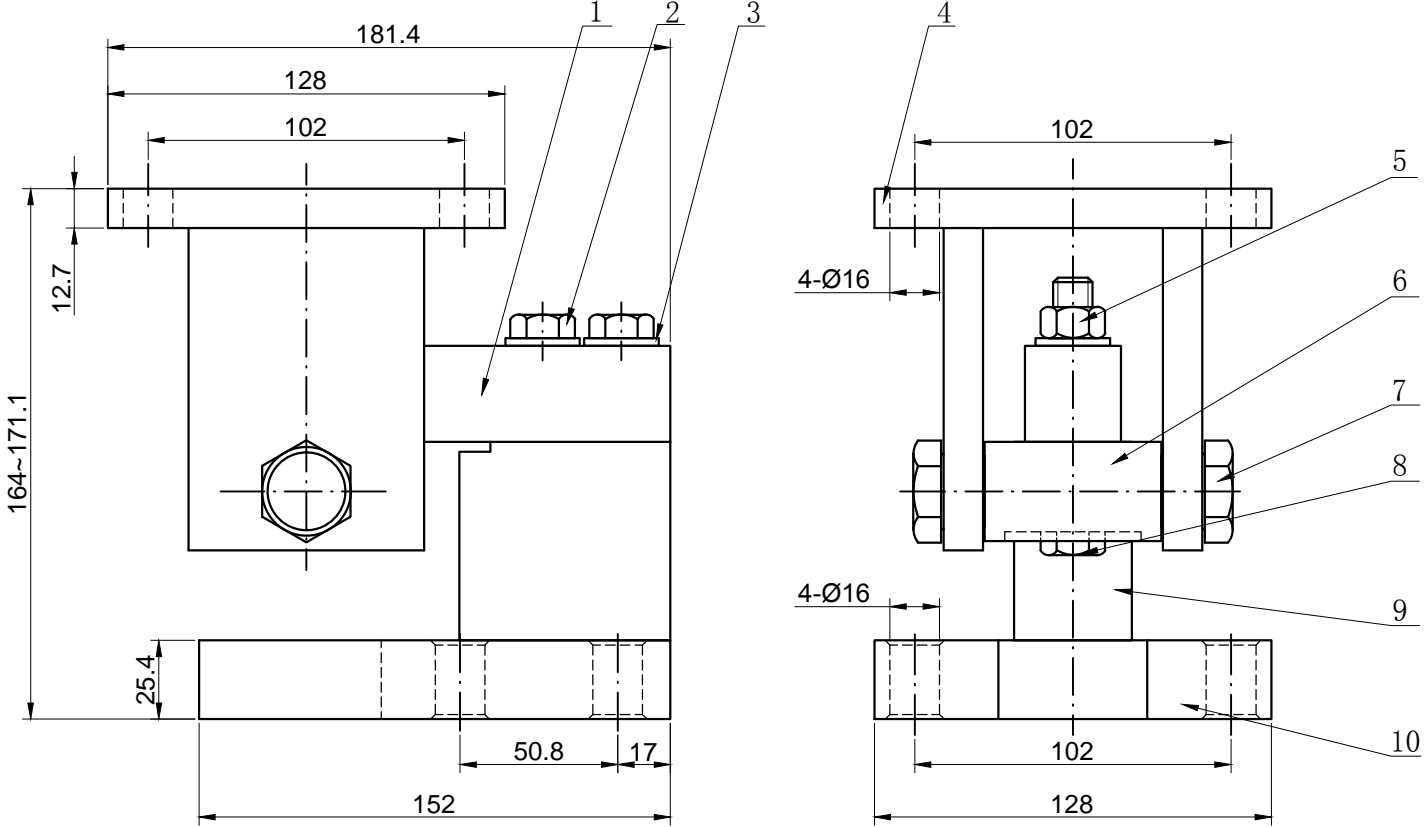


GENERAL REMARKS



| 10 | BASE | Alloy Steel | | 1 | |
|------|-------------|-------------|-------------|-----|--|
| 9 | CUSHION | Alloy Steel | | 1 | |
| 8 | BOLT 3 | Alloy Steel | | 1 | |
| 7 | BOLT 2 | Alloy Steel | | 2 | |
| 6 | LINK | Alloy Steel | | 1 | |
| 5 | NUT | Alloy Steel | | 1 | |
| 4 | CHAIR | Alloy Steel | | 1 | |
| 3 | WASHER | Alloy Steel | | 3 | |
| 2 | BOLT 1 | Alloy Steel | | 2 | |
| 1 | LOAD CELL | Alloy Steel | | 1 | 563YH , 100lb to SE5Klb , not included |
| ITEM | DESCRIPTION | MATERIAL | PART NUMBER | QTY | REMARKS |

IMPORTANT NOTICE
 This document consisting confidential proprietary information belongs to ANYLOAD who retains all copy and other rights. This document is submitted under a confidential relationship for specific purpose, and the receipt agrees by accepting this document not to supply or disclose any information regarding it to any unauthorized person.

| | |
|-----------------------|---------------|
| APPROVED | DATE |
| V0 APPROVED George. G | DATE 21-11-10 |
| CHECKED Tryke. H | DATE 21-11-10 |
| DRAWN Allen. Z | DATE 21-11-10 |

ANYLOAD

TITLE:
 563YHM2- (0.1-SE5)K1b
 General Arrangement
 DRAWING NO: LM0604055
 PROJECTION: SHEET 1 OF 1