

www.massload.com www.massload.com www.massload.com www.massload.com www.massload.com  
**GN200 S-Type Loadcell**



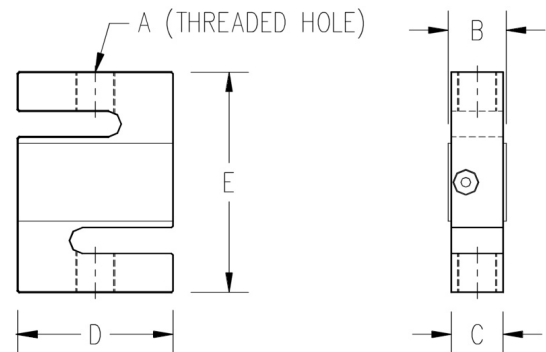
- 250 lbs (125 kg)
- 500 lbs (225 kg)
- 750 lbs (375 kg)
- 1,000 lbs (450 kg)
- 1,500 lbs (680 kg)
- 2,000 lbs (900 kg)
- 2,500 lbs (1100 kg)
- 5,000 lbs (2250 kg)
- 10,000 lbs (4500 kg)
- 15,000 lbs (6800 kg)

Performance Specifications

Safe Overload	150%
Full Scale Output	3mv/V +/- .25% FS
Maximum Excitation	15 VDC
Non-Linearity	<0.03% FS
Hysteresis	<0.02%FS
Non-Repeatability	<0.01% FS
Thermal Sensitivity Shift	0.0008% of reading/°F
Thermal Zero Shift	0.0015% FS/°F
Barometric Effect	NIL
Bridge Resistance	350 Ω
Operating Temp Range	-50°C to +80°C
Compensated Temp Range	-10°C to +40°C
Sealing Standard	IP-67

The GN200 loadcell is ideally suited to many applications such as scale conversions, tension applications and general purpose weighing.

This versatile, low cost loadcell is available in stainless or nickel plated alloy steel. With a wide range of capacities available, you will find one to fit your needs.



Capacity	A		B		C		D		E	
	in	mm	in	mm	in	mm	in	mm	in	mm
1K=1000lb										
250lb	1/4"-28 UNF	19	0.75	13	0.50	13	2.00	51	3.00	76
500lb, 750lb	1/2"-20 UNF	25	1.00	19	0.75	19	2.00	51	3.00	76
1K, 1500lb	1/2"-20 UNF	25	1.00	19	0.75	19	2.00	51	3.00	76
2K, 2500lb	1/2"-20 UNF	32	1.25	25	1.00	25	2.00	51	3.00	76
3K, 5K, 10K	3/4"-16 UNF	32	1.25	25	1.00	25	3.00	76	4.25	108
15K	1"-14 UNF	38	1.50	32	1.25	32	3.50	89	5.50	140