

www.massload.com www.massload.com www.massload.com www.massload.com www.massload.com
TWA-400 Truck Scale Assembly
 www.massload.com www.massload.com www.massload.com www.massload.com www.massload.com



The TWA-400 weighing assembly is constructed of cast alloy steel and hardened to ensure accurate weighing results. The double link loading system allows for free movement in all directions, reducing the likelihood of binding and increasing the accuracy.

This assembly is easy to install by either bolting on, or welding on. Due to its modular design, it can easily be retrofitted to existing scales.

OPTIONS

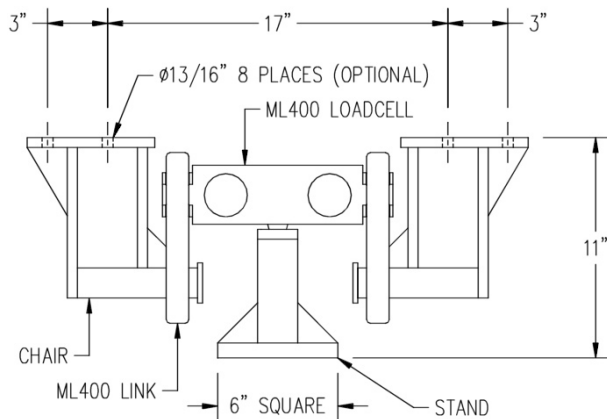
- Weld-on chair
- Bolt-on chair
- Base plate for stand

TSA-400 Performance Specifications

Safe Overload	150% FS
FS Output	3mV/V +/- .25% FS
Max Excitation	15 VDC
Non-Linearity	<0.03% FS
Hysteresis	<0.02% FS
Non-Repeatability.....	<0.01% FS
Therm Sens Shift.....	0.0008% of reading/°F
Therm Zero Shift	0.0015% FS/°F
Barometric Effect.....	nil
Bridge Resistance.....	350Ω
Operating Temp Range.....	-50°C to +80°C
Compensated Temp Range....	-10°C to +40°C
Sealing Standard.....	IP-67



ML0400 Loadcell
 Type Approval
 CC# 99-035
 nmax = 10,000
 Class III L
 Multiple Cell



Capacities Available:

- 25,000 lbs. (12,000 kg)
- 40,000 lbs. (19,000 kg)
- 50,000 lbs. (23,000 kg)
- 60,000 lbs. (28,000 kg)
- 75,000 lbs. (34,000 kg)

