

## ML400 Double Ended Shearbeam

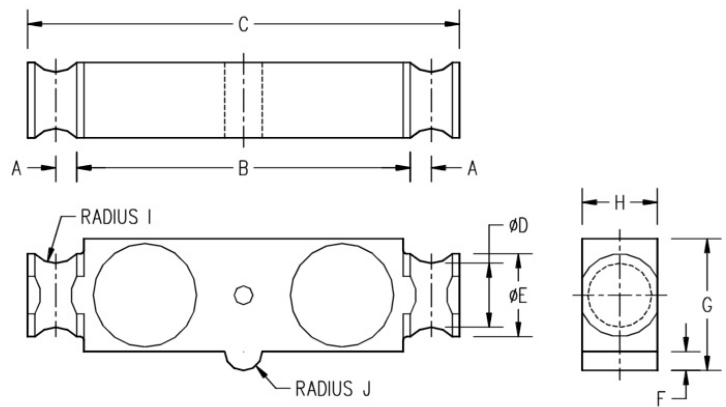


50,000 lbs (23,000 kg)  
 60,000 lbs (28,000 kg)  
 75,000 lbs (34,000 kg)  
 100,000 lbs (46,000 kg)  
 125,000 lbs (57,000 kg)

50,000 lbs SE (23,000 kg)

### Performance Specifications

|                           |                       |
|---------------------------|-----------------------|
| Safe Overload             | 150%                  |
| Ultimate Overload         | 300%                  |
| Full Scale Output         | 3mv/V +/- .25% FS     |
| Maximum Excitation        | 15 VDC                |
| Non-Linearity             | <0.03% FS             |
| Hysteresis                | <0.02%FS              |
| Non-Repeatability         | <0.01% FS             |
| Thermal Sensitivity Shift | 0.0008% of reading/°F |
| Thermal Zero Shift        | 0.0015% FS/°F         |
| Barometric Effect         | NIL                   |
| Bridge Resistance         | 700 Ω                 |
| Operating Temp Range      | -50°C to +80°C        |
| Compensated Temp Range    | -10°C to +40°C        |
| Sealing Standard          | IP-67                 |



The ML400 is designed for center mounting and double link loading. This makes it ideal for truck and track scales.

It is available in nickel plated alloy steel. It is temperature compensated and completely environmentally protected.

Be assured of consistent, reliable, and accurate operation.



CC# 99-035  
 nmax=10,000  
 Class III L  
 Multiple Cell

| Capacity    | A    |    | B     |     | C     |     | D    |    | E    |    |
|-------------|------|----|-------|-----|-------|-----|------|----|------|----|
| 1K=1000lb   | in   | mm | in    | mm  | in    | mm  | in   | mm | in   | mm |
| 50K SE      | 0.50 | 13 | 6.25  | 159 | 8.25  | 210 | 1.63 | 41 | 2.00 | 51 |
| 50K/60K/75K | 0.75 | 19 | 8.50  | 216 | 11.50 | 292 | 1.70 | 43 | 2.20 | 56 |
| 100K/125K   | 1.00 | 25 | 10.50 | 267 | 14.50 | 368 | 2.44 | 62 | 3.20 | 81 |
| Capacity    | F    |    | G     |     | H     |     | I    |    | J    |    |
| 1K=1000lb   | in   | mm | in    | mm  | in    | mm  | in   | mm | in   | mm |
| 50K SE      | 0.50 | 13 | 3.00  | 76  | 2.00  | 51  | 0.50 | 13 | 0.50 | 13 |
| 50K/60K/75K | 0.50 | 13 | 3.50  | 89  | 2.00  | 51  | 0.81 | 21 | 0.50 | 13 |
| 100K/125K   | 0.82 | 21 | 4.68  | 119 | 2.90  | 74  | 1.00 | 25 | 1.50 | 38 |

