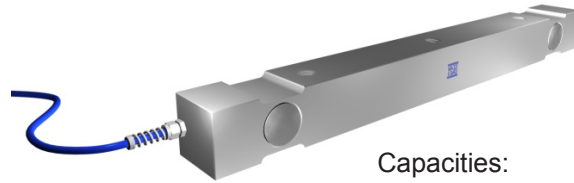
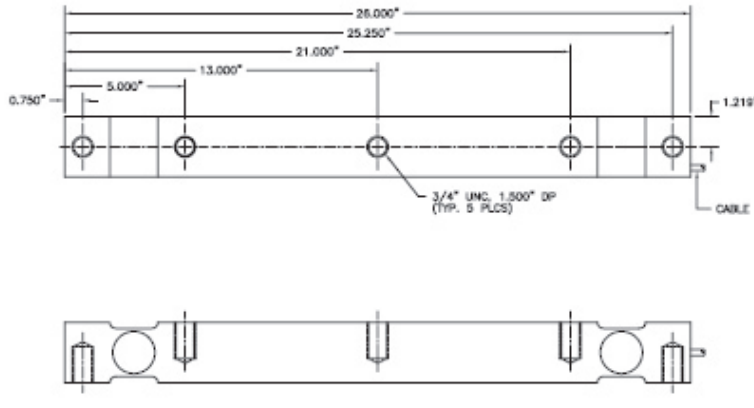


www.massload.com www.massload.com www.massload.com www.massload.com www.massload.com
ML1100 Double Ended Shearbeam
 www.massload.com www.massload.com www.massload.com www.massload.com www.massload.com

The ML-1100-25K is designed for rigid mount and very rugged applications. This makes it an ideal sensor for onboard weighing and any other situation where dynamic loads may be applied. It is available in nickel plated alloy steel. Be assured of consistent, reliable and accurate results while using this loadcell.



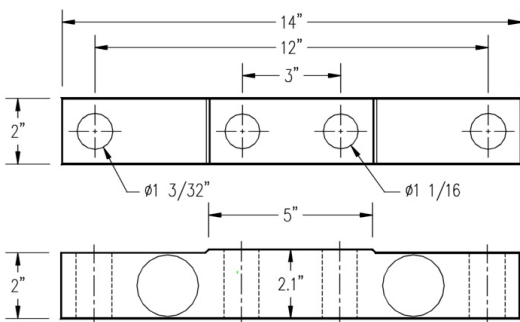
Capacities:
25,000 lb



The ML1100-25K SE (small shell) is designed for applications that require a smaller loadcell.



Capacities:
25,000 lb



Performance Specifications

Safe Overload	150%
Ultimate Overload	300%
Full Scale Output	2mv/V +/- .25% FS
Maximum Excitation	15 VDC
Non-Linearity	<0.03% FS
Hysteresis	<0.02%FS
Non-Repeatability	<0.01% FS
Thermal Sensitivity Shift	0.0008% of reading/°F
Thermal Zero Shift	0.0015% FS/°F
Barometric Effect	NIL
Bridge Resistance	700 Ω
Operating Temp Range	-50°C to +80°C
Compensated Temp Range	-10°C to +40°C
Sealing Standard	IP-67